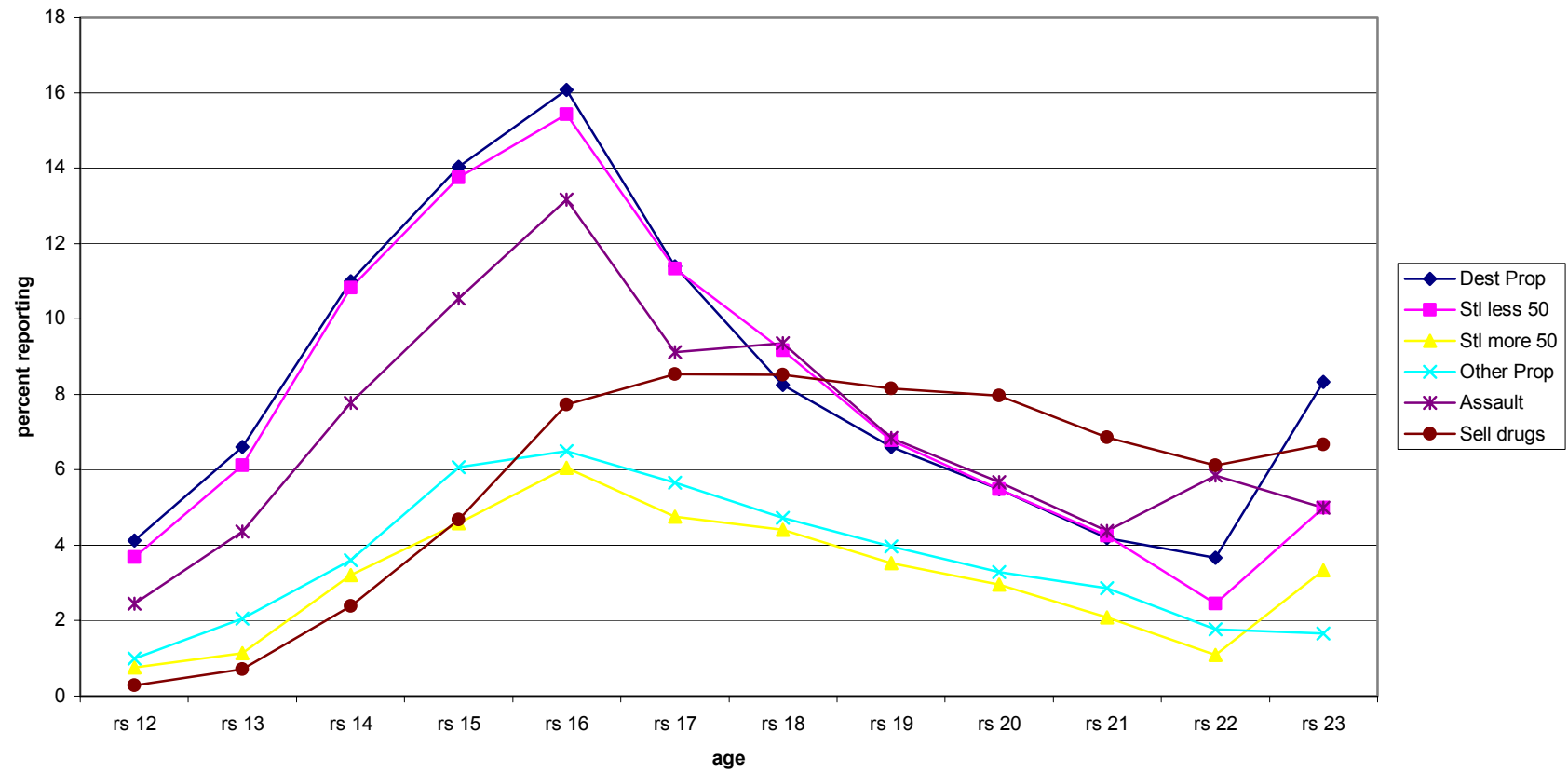
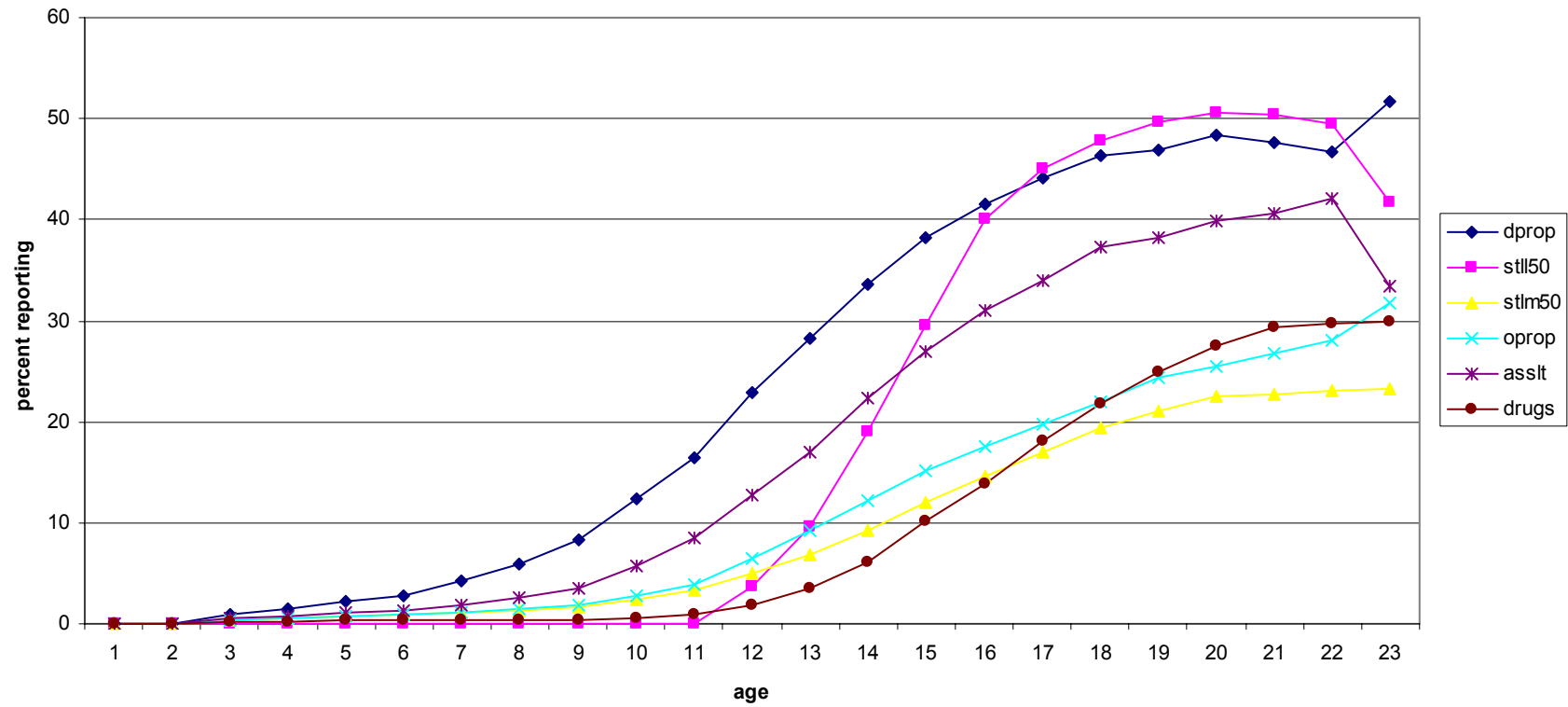


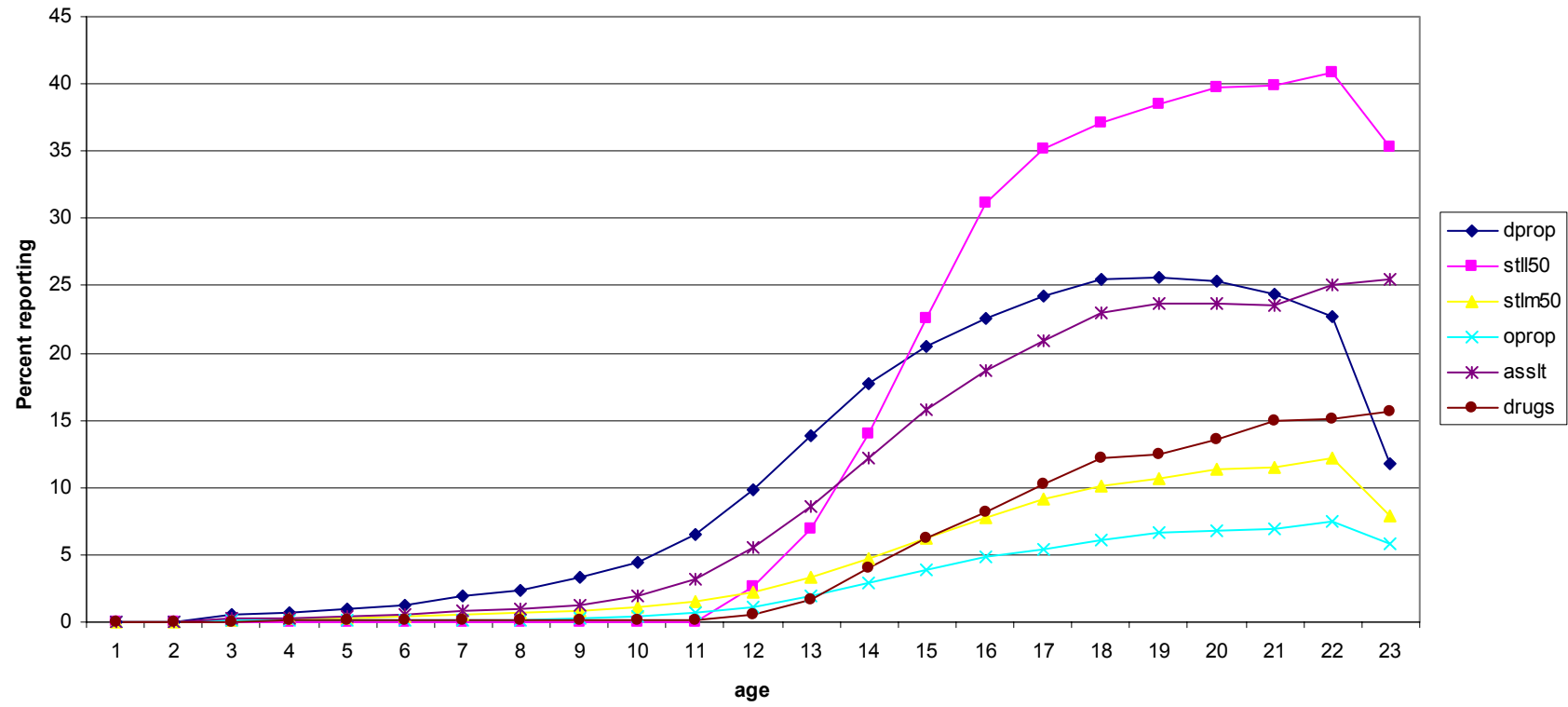
Crime participation by age



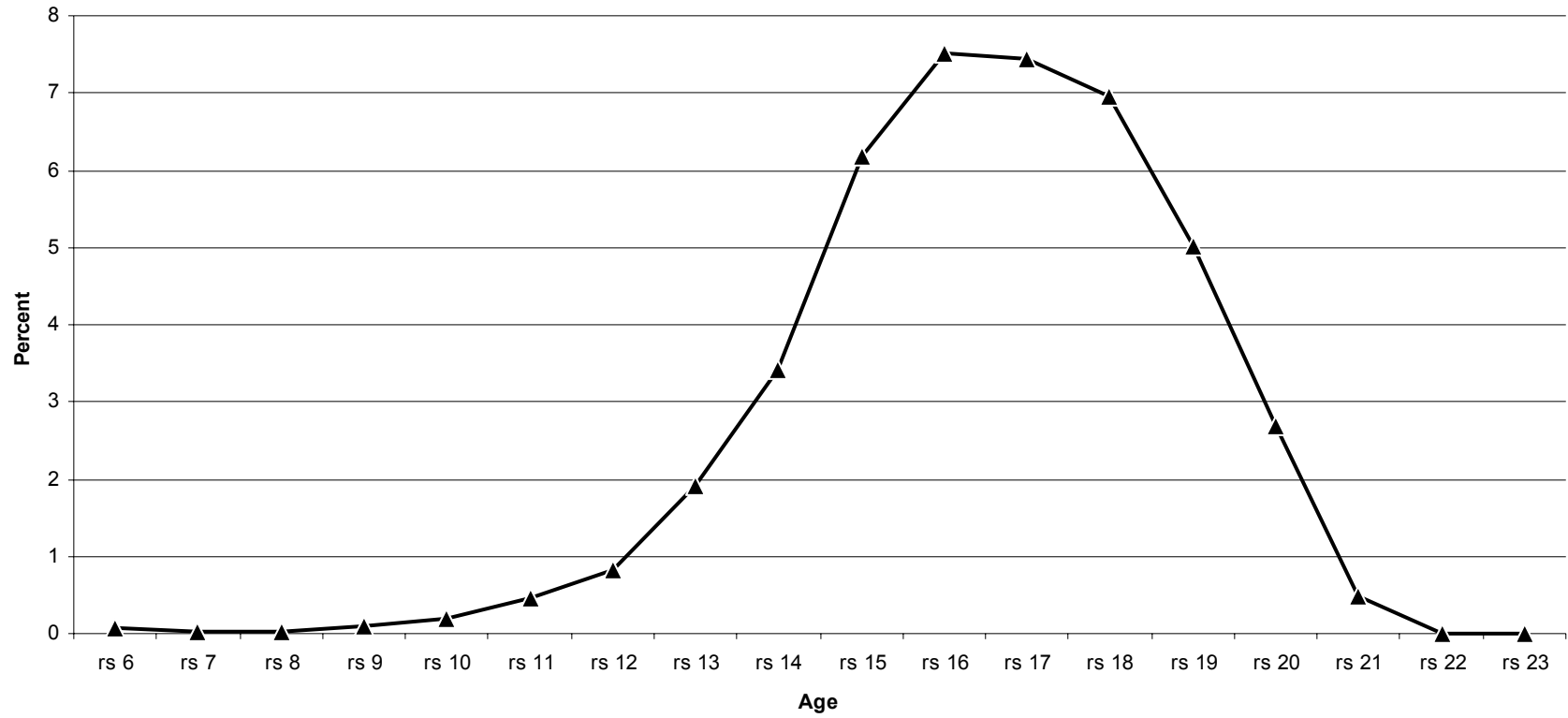
Males ever reporting crime



Female Crime Participation



Percent Arrested by Age



**Comparison of NLSY97 with Uniform Crime Report
Rounds 1-5**

Age	UCR 1997	Percent NLS Custom Wt	NLS X-S Wt
<12	0.2	0.2	0.2
13-14	2.9	3.7	3.8
15	4.1	6.7	7.3
16	4.7	6.8	7.2
17	4.6	7.1	7.3
18	4.5	7.6	7.6
19	3.6	5.0	5.4
20	2.9	4.3	4.2
21	2.6	3.4	3.9
22	2.3	4.2	3.7
23	2.1	0.0	1.1

Comparison of NLSY97 with Uniform Crime Report: MALES
Rounds 1-5

Age	UCR 1997	Percent NLS Custom Wt	NLS X-S Wt
<12	0.3	0.3	0.3
13-14	4.0	4.8	4.8
15	5.9	8.3	9.2
16	6.9	9.2	9.8
17	6.9	10.9	11.3
18	6.8	12.0	12.0
19	5.4	7.8	8.2
20	4.3	6.3	6.3
21	3.8	5.8	6.4
22	3.4	5.0	4.0
23	3.0	0.0	0.0

**Comparison of NLSY97 with Uniform Crime Report: Females
Rounds 1-5**

Females	UCR 1997	Percent NLS Custom Wt	NLS X-S Wt
<12	0.1	0.7	0.1
13-14	1.7	2.5	2.8
15	2.3	4.9	5.3
16	2.4	4.3	4.4
17	2.2	3.1	3.0
18	2.0	2.7	3.0
19	1.6	2.1	2.4
20	1.4	2.1	2.1
21	1.2	0.9	1.3
22	1.1	3.3	3.3
23	1.1	0.0	2.3